

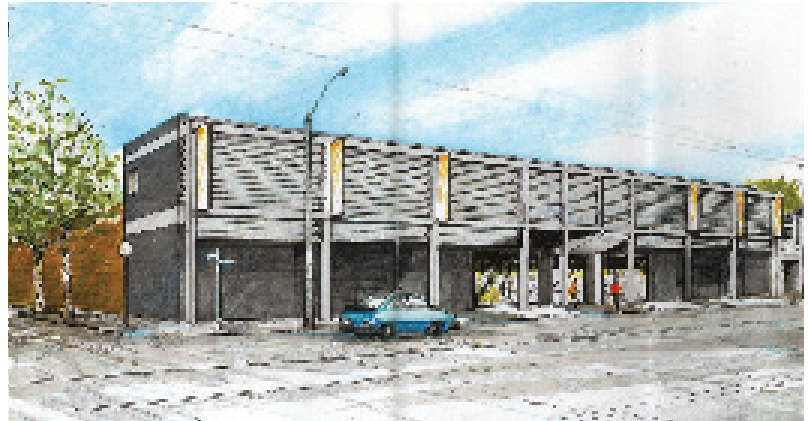
# CAR DEALERSHIP SERVICE CENTRE

Melway Reference 2A E8

North Melbourne Victoria Australia

Planning services for the redevelopment of a former factory site at 189 Arden Street, North Melbourne. The service centre includes provision of new office and customer reception facilities, a customer café, spare parts sales area and the installation of 34 service bays and associated hoists for vehicle servicing. External improvements were also made to the building. Planning services included:

- liaison with the project designers and client regarding planning parameters and development detail;
- consultation with Melbourne City Council planning department;
- coordination of supporting material to accompany the planning permit application;
- preparation of the planning permit application;
- facilitation of the application through the planning process, resulting in the issue of a planning permit.



**collie**

*designers and facilitators*

[www.colliepl.com](http://www.colliepl.com)

version 20 August 2009 2.1 (2)